



# CZECHIA BUSINESS DELEGATION

Accompanying the President of the Czech Republic,  
H.E. Mr. Petr Pavel on his visit to Switzerland.



5–7 November 2024



# CZECHIA BUSINESS DELEGATION

Accompanying the President of the Czech Republic, H.E. Mr. Petr Pavel  
on his visit to Switzerland.

**5–7 November 2024**



Prague © CzechTourism – Photo Bank. Author: Libor Sváček

## Czech Republic – Basic Data

|                    |   |
|--------------------|---|
| Surface area:      | 78 864 sq. km (common border with the Federal Republic of Germany, Austria, Slovakia and Poland)  |
| Population:        | 10.52 million   |
| Capital city:      | Prague  |
| Official language: | Czech   |
| President:         | H.E. Mr Petr Pavel  |
| Membership:        | European Union, United Nations, NATO, WTO, International Monetary Fund, International Bank for Reconstruction and Development, OECD, etc. |
| Time zone:         | Central European Time (GMT + 1), Summer Time (GMT + 2)  |
| Currency:          | 1 Czech crown (Kč/CZK) = 100 hellers; 1 USD = 22.999 (average over the last 3 months)   |
| Internet domain:   | .cz   |

Practical information about conditions of transport into the Czech Republic and stay in the CR available at [www.czech.cz](http://www.czech.cz).

## 1. Czech Chamber of Commerce

Na Florenci 2116/15, 110 00 Praha 1  
E-mail: office@komora.cz  
Phone: +420 266 721 300  
www.komora.cz



**Participant:**  
**Radek Jakubský,**  
Vice President

The Czech Chamber of Commerce was established in 1993 as a national chamber with non-compulsory membership. It is the largest and most representative business association in the Czech Republic including small, medium and large companies, self-employed entrepreneurs, associations, unions and craftsmen organisations. The Czech Chamber of Commerce has regional (regions and districts) and professional (unions, associations, etc.) networks with approximately 16 000 members. They represent 60 % of the GDP of the country and 66 % of the employable population in the Czech Republic. The Czech Chamber of Commerce provides services to its members, mainly in the field of legislation, export promotion, education, etc. Its main aim is to facilitate access to foreign markets for the Czech business community and help to create a favourable business environment in the Czech Republic.

## Companies

1. Czech Chamber of Commerce
2. BIOCEV - Biotechnology and Biomedicine Centre of the Czech Academy of Sciences and Charles University
3. Bioinova, a.s.
4. CasInvent Pharma, a.s.
5. Cayman Pharma, s.r.o.
6. Czech Association of Pharmaceutical Companies
7. DIANA Biotechnologies, a.s.
8. ELI ERIC
9. i&i Prague, s.r.o.
10. IOCB TECH, s.r.o.
11. Kapaji, s.r.o.
12. Oncomed manufacturing, a.s.
13. Prague.bio, z.s.
14. Quinta-Analytica, s.r.o.
15. Santiago chemicals, s.r.o.
16. SOTIO Biotech, a.s.
17. TELIGHT Brno, s.r.o.
18. Univerzita Palackého v Olomouci, Ústav molekulární a translační medicíny (IMTM)

# Digital Catalogue of **CZECH ICT** **SOLUTIONS**



Czechia is a regional leader  
in ICT solutions.

## OVERVIEW OF **CZECH ICT SOLUTIONS IN ONE PLACE**

THIS SPECIAL **PLATFORM WILL HELP YOU TO FIND**

**A PARTNER**

**A SOLUTION**

## THE SOLUTIONS ARE DIVIDED INTO **15 SUBGROUPS**

1. Czech Search Engine Host
2. Czech eCommerce Solutions (Czech Digital eCommerce, eShop Solutions, Digital Marketing and Media Solutions, Czech Digital News Solutions)
3. IoT
4. Czech eGovernment Solutions and Digital Law Solutions
5. Czech Innovative Management and Office Solutions
6. Czech FinTech Solutions
7. Czech Digital Transport Solutions and Smart Cities
8. Czech Digital Sport, eSport and Culture Solutions
9. Czech Digital Network Security and Cyber Security Solutions, Digital Identity Solutions
10. Czech Digital Mapping Solutions and Czech Digital Weather Solutions
11. Czech Digital Gaming Solutions
12. Czech Digital Education Solutions
13. Czech Collaboration and Communication Platform Solutions
14. Czech e-Health Solutions
15. Czech 3D Solutions

[www.czechdigitalsolutions.cz/en](http://www.czechdigitalsolutions.cz/en)



## 2. BIOCEV - Biotechnology and Biomedicine Centre of the Czech Academy of Sciences and Charles University

Průmyslová 595, 252 50 Vestec  
E-mail: petr.solil@biocev.eu  
Phone: +420 774 727 981  
www.biocev.eu



**Participant:**  
**Petr Solil,**  
Science Communication  
and Diplomacy

We search for the molecular basis of human diseases. Based on our discoveries, we design new drugs and therapeutic procedures. BIOCEV builds upon three pillars of the knowledge triangle: teaching and education, research and development, and transfer of research results into practice. The uniqueness of the project lies in well-balanced activities and goals set within the three pillars of the knowledge triangle, in BIOCEV supported by modern infrastructure and novel approaches to conducting research, which are based on the experience of top-quality world research institutes.

**Number of Employees:** 500+

**Year of Foundation:** 2012

## 3. Bioinova, a.s.

Vídeňská 1083, 142 00 Praha 4  
E-mail: peter.bauer@bioinova.cz  
Phone: +420 722 540 146  
www.bioinova.cz



**Participants:**  
**Peter Bauer,**  
CEO  
**Vladimír Schwarz,**  
Member of the Board  
of Directors

Development and production of in vitro diagnostic medical devices (Bi-Virtest, a point-of-care device/lateral flow test for distinguishing between acute bacterial and viral infections; Bi-CoV and Bi-Micro, sampling sets with self-isolation of viral and microbial DNA/RNA for direct molecular analysis of viruses and bacteria). ATMPs in clinical trials: BiCure orthoMSCp (phase IIb, knee osteoarthritis), BiCure ophthalmMSCs (phase I/IIa, degenerative retinal diseases). ATMPs excipient: BiCureSol, a GMP-level solution for preservation, transport, and application of stem cells to patients. Clinically relevant GMP-grade cryopreservation solutions usable as excipients. Services include GMP Quality Control services, clean rooms monitoring, sterility tests, cell phenotype monitoring, and more. Contract research focuses on the biocompatibility of (nano)materials for medical use, the biological efficacy and functionality of (nano) materials, specific expression profiles of cells, production of stem cell-based cell-free products, Clinical Research Organization (CRO), and contract manufacturing of ATMPs.

4. CasInvent Pharma, a.s.

Komenského nám. 220/2, Brno  
E-mail: helikar@casinvent.com  
Phone: +420 728 995 850  
www.casinvent.com



**Participant:**  
**Vojtěch Helikar,**  
COO/CFO

Drug discovery; developing small molecule compound to fight resistant tumors.

**Number of Employees:** 15

**Year of Foundation:** 2020

5. Cayman Pharma, s.r.o.

Práce 657, 277 11 Neratovice  
E-mail: jiri.kratochvil@  
caymanpharma.cz  
Phone: +420 736 506 671  
www.caymanpharma.com



**Participants:**  
**Jiří Kratochvíl,**  
Managing Director  
**Petra Miketová,**  
Commercial Director

Production of active pharmaceutical ingredients on prostaglandin base.

**Number of Employees:** 125

**Year of Foundation:** 1978, renamed in 2006

6.

## Czech Association of Pharmaceutical Companies

Na Pankráci 1618/30, 140 00 Praha  
E-mail: filip.vrubel@caff.eu  
Phone: +420 608 436 065  
www.caff.eu



**Participant:**  
**Filip Vrubel,**  
Executive Director

ČAFF joins the leading producers and suppliers of generic and biosimilar medicines in the Czech Republic, including domestic pharmaceutical manufacturers - 31 member companies, 12 of which are medicines manufacturers (incl. life-saving products or APIs) with a site in CZ - ČAFF represents domestic manufacturers who together produce 90% of the medicines production in the Czech Republic.

**Number of Employees:** 2

**Year of Foundation:** 2000

7.

## DIANA Biotechnologies, a.s.

Průmyslová 596, 252 50 Vestec  
E-mail: martin.dienstbier@  
dianabiotech.com  
Phone: +420 605 546 836  
www.dianabiotech.com



**Participant:**  
**Martin Dienstbier,**  
Co-founder, CFO & COO

We are a unique diversified Czech biotech with strong R&D operating in 4 business segments:

- 1) PCR diagnostics (IVDR): developing and manufacturing molecular diagnostic kits (detection of viral/bacterial pathogens, genetics) and instruments (qPCR cyler, NA extractor) selling to clinical (hospital) labs.
- 2) Life-science: developing and manufacturing enzymes and kits for molecular biology labs and offering advanced custom oligo-synthesis; selling to research labs.
- 3) Monoclonal antibodies: unique expertise in developing high-quality monoclonal antibodies against small molecules; on demand development for diagnostics & biotech companies.
- 4) Drug discovery: patented DIANA technology for HTS assay development and selectivity profiling of kinase inhibitors; small molecule drug discovery services for pharma customers.

**Number of Employees:** 100

**Year of Foundation:** 2018



## 8. ELI ERIC

Za Radnicí 835, 252 41 Dolní Břežany  
E-mail: roman.hvezda@eli-beams.eu  
Phone: +420 602 283 411  
www.eli-laser.eu, www.eli-beams.eu



**Participant:**  
**Roman Hvězda,**  
Director of ELI Beamlines

ELI ERIC (Extreme Light Infrastructure - European Research Infrastructure Consortium) is a cutting-edge research organization dedicated to the advancement of laser-based research and technologies. It operates state-of-the-art laser facilities that enable pioneering scientific experiments in various fields such as physics, materials science, medicine, and energy. ELI ERIC's core activities include providing access to high-intensity lasers for international researchers, supporting innovative scientific projects, and fostering collaborations between academia and industry. Their services include offering advanced research capabilities for exploring new materials, developing medical applications like cancer treatments, and studying fundamental processes in extreme conditions.

**Number of Employees:** 650  
**Year of Foundation:** 2021

## 9. i&i Prague, s.r.o.

Pobřežní 394/12, 186 00 Praha  
E-mail: stibal@iniprague.com  
Phone: +420 603 941 825  
www.iniprague.com



**Participants:**  
**David Stíbal,**  
Vice Director  
**Jiří Moos,**  
Executive director

Incubation of innovative star-up companies in life science area especially focused on drug development, diagnostics and MedTech.

**Number of Employees:** 9  
**Year of Foundation:** 2017

## 10. IOCB TECH, s.r.o.

Flemingovo nám. 542/2, 160 00 Praha  
E-mail: barbara.eignerova@uochb.cas.cz  
Phone: +420 601 502 151  
www.iocbtech.cz



**Participant:**  
**Barbara Eignerová,**  
Lawyer

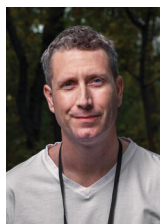
Tech transfer - identification of commercially interesting projects at IOCB, analyses of their market potential and patentability, protection of intellectual property, project management, looking for commercial partners and negotiation contractual terms of licence agreements.

**Number of Employees:** 20

**Year of Foundation:** 2009

## 11. Kapaji, s.r.o.

Litevská 1174/8, 100 00 Praha  
E-mail: pavel@kapaji.eu  
Phone: +420 725 753 681  
www.kapaji.eu



**Participant:**  
**Pavel Calta,**  
Executive

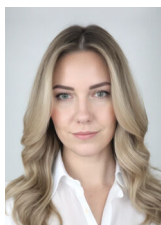
We provide support in all stages of pharmaceutical development, starting from the technical and IP evaluation of potential target, through reverse engineering and preformulation and formulation development stages, up to preparation for clinical trials and support in technical writing and registration. We also apply our tools to the troubleshooting of routine pharmaceutical manufacturing, including advanced analytical techniques.

**Number of Employees:** 5

**Year of Foundation:** 2018

## 12. Oncomed manufacturing, a.s.

Karásek 2229/1b, 621 00 Brno  
E-mail: jorova@oncomed.cz  
Phone: +420 777 481 815  
www.oncomed.cz



**Participant:**  
**Zuzana Jorová,**  
Marketing and  
Sales Manager

Oncomed manufacturing a.s., Brno, Czech Republic, subsidiary of the German pharmaceutical company medac Gesellschaft für klinische Spezialpräparate mbH. Contract Development and Manufacturing Organisation focused on manufacturing of high potent and anticancer (cyto) injectables in clinical and commercial scale including small molecule APIs drug products (end-to-end solution) and more innovative large molecule drug products (Fill & Finish service), like ADCs, HPAPI proteins & mAb and oligonucleotides.

**Number of Employees:** 207

**Year of Foundation:** 2010

## 13. Prague.bio, z.s.

Flemingovo nám. 542/2, 160 00 Praha  
E-mail: kinzlova@prague.bio  
Phone: +420 725 319 233  
www.prague.bio



**Participant:**  
**Petra Kinzlová,**  
CEO

Networking, sector visibility abroad, connecting academia and business in biotec, technology transfer support.

**Number of Employees:** 2

**Year of Foundation:** 2023

#### 14. Quinta-Analytica, s.r.o.

Pražská 1486/18c, 102 00 Praha  
E-mail: roman.grunt@quinta.cz  
Phone: +420 602 658 476  
www.quinta.cz



**Participants:**  
**Roman Grunt,**  
CEO  
**Jiří Raška,**  
Chief Commercial Officer

Analytical and clinical services for global pharmaceutical manufacturers in the area of generic or innovative drugs, both regular as well as biological one. We provide also formulation drug development and small manufacturing.

**Number of Employees:** 230

**Year of Foundation:** 1996

#### 15. Santiago chemicals, s.r.o.

Minická 189, 278 01 Kralupy n. Vltavou  
E-mail: krystof.sigut@santiago-lab.com  
Phone: +420 776 750 591  
www.santiago-lab.com



**Participant:**  
**Kryštof Šigut,**  
CEO

Our company provides contract research and custom synthesis. Mainly we are helping our clients to prepare novelty drugs, new chemical entities with activity againsts cancer (like ADCs), Covid-19 and other viruses.

**Number of Employees:** 10

**Year of Foundation:** 2018

## 16. SOTIO Biotech, a.s.

Českomoravská 2532/19b, 190 00 Praha  
E-mail: spisek@sotio.com  
Phone: +420 725 855 911  
www.sotio.com



**Participants:**  
**Radek Špíšek,**  
CEO  
**Richard Kapsa,**  
Member of the Board  
of Directors

SOTIO Biotech's product pipeline includes a next-generation PD-1-inhibiting cytokine, a proprietary technology designed to improve on the efficacy of CART therapies and a new generation of potent and stable antibody-drug conjugates (ADCs). We are building a pipeline of oncology programs by pursuing promising early-stage candidates backed by strong science through strategic licensing, M&A and in-house discovery efforts.

**Number of Employees:** 200 worldwide,  
majority in Prague

**Year of Foundation:** 2010

## 17. TELIGHT Brno, s.r.o.

Libušina třída 863/21, 623 00 Brno  
E-mail: vojtech.sanetrnik@telight.eu  
Phone: +420 739 244 508  
www.telight.eu



**Participant:**  
**Vojtěch Sanetrník,**  
Chief Operating Officer

Holographic microscope Q-Phase for advanced live-cell imaging and analysis, universal super-resolution system for gentle live cell imaging with the resolution of 90 nm, research and development in the field of light optics and microscopy, including software development.

**Number of Employees:** 18

**Year of Foundation:** 2019

18. **Univerzita Palackého  
v Olomouci, Ústav molekulární  
a translační medicíny (IMTM)**

Hněvotínská 5, 779 00 Olomouc  
E-mail: marian.hajduch@upol.cz  
Phone: +420 603 553 665  
www.imtm.cz



**Participant:**  
**Marián Hajdúch,**  
Director

Research and development of innovative drugs and diagnostic approaches, translational and personalized medicine.

**Number of Employees:** 3000+

**Year of Foundation:** 1573



## Notes:

A series of horizontal dotted lines for taking notes.



## CZECH CHAMBER OF COMMERCE

Na Florenci 2116/15, 110 00 Prague 1

Phone: +420 266 721 300

E-mail: [office@komora.cz](mailto:office@komora.cz)

[www.komora.cz](http://www.komora.cz)